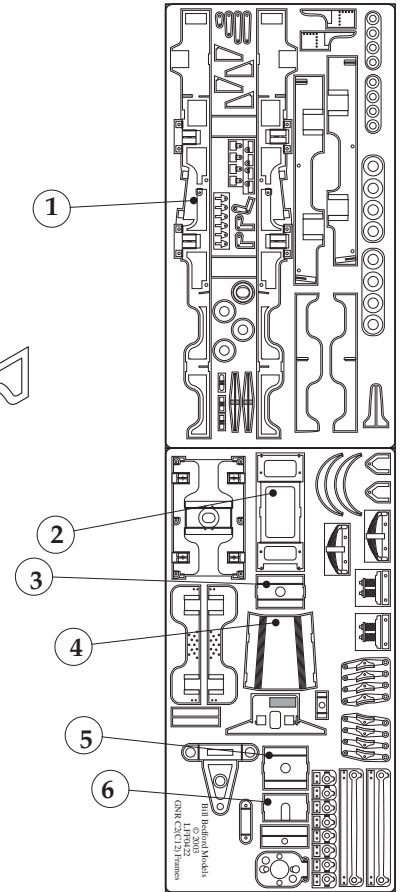
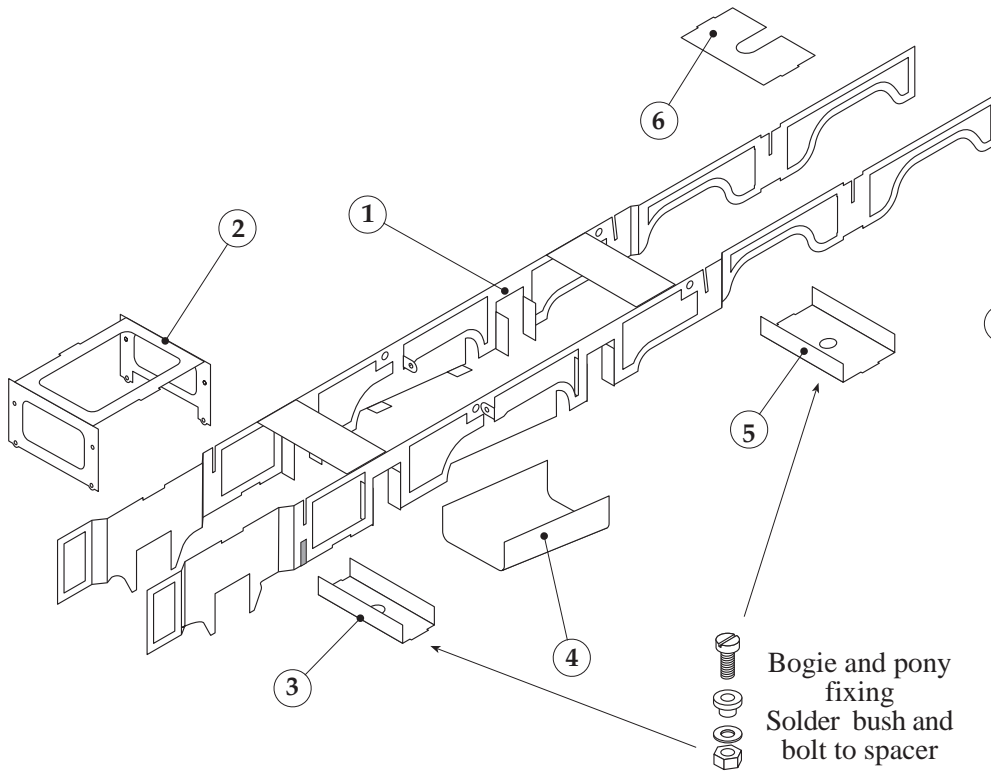


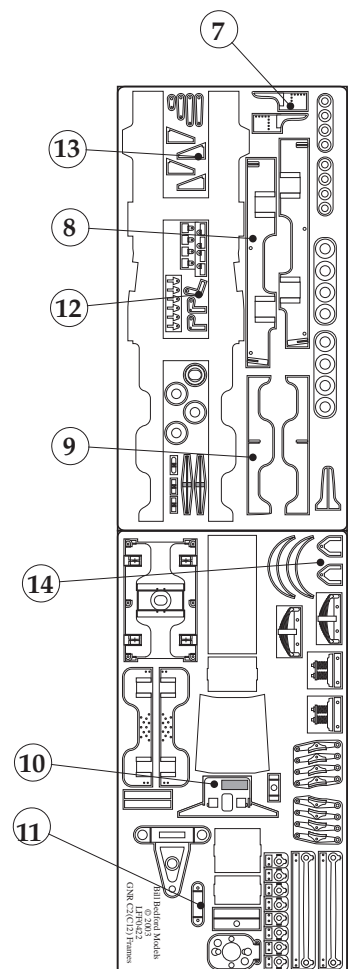
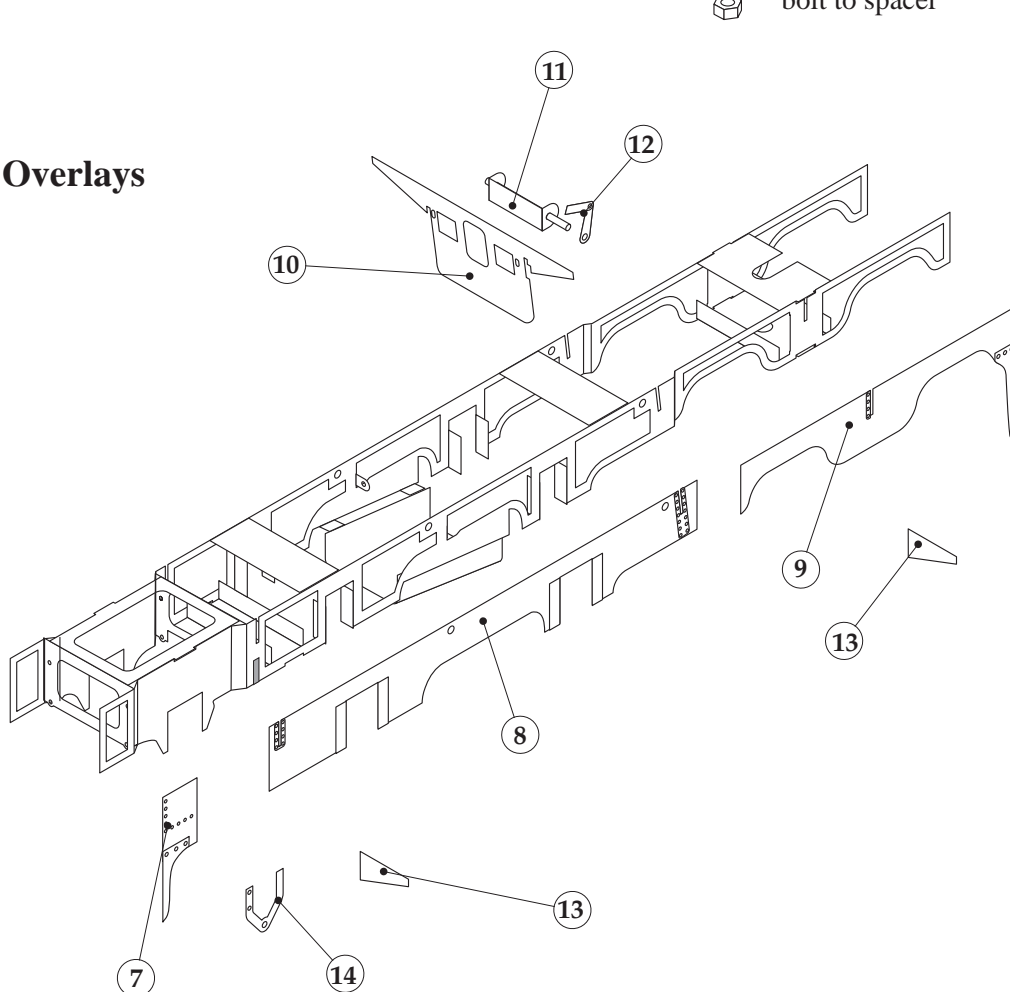
LFF0422 GNR/LNER C12 chassis

For the Craftsman body

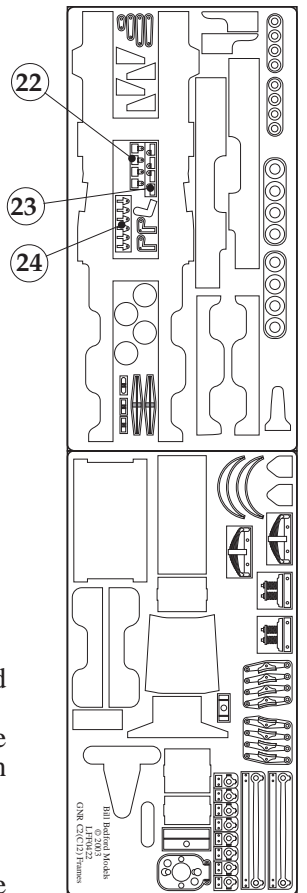
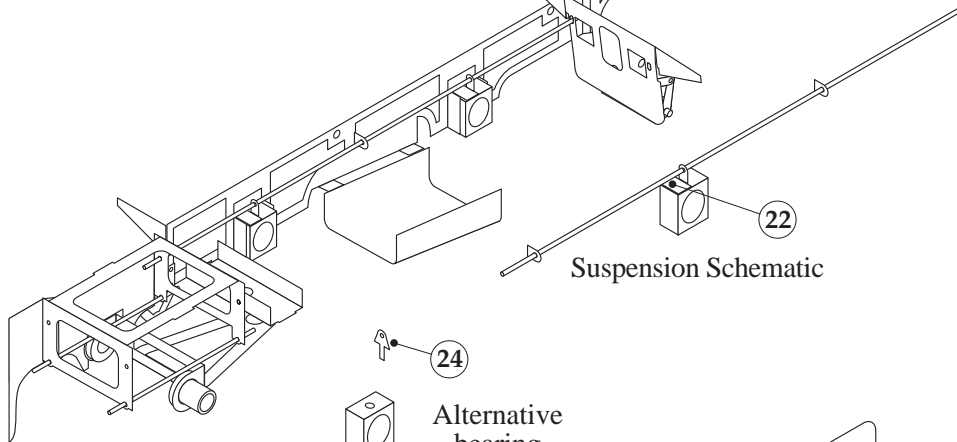
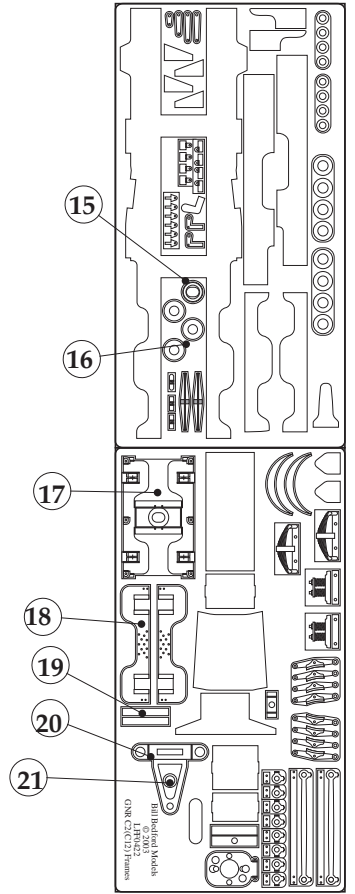
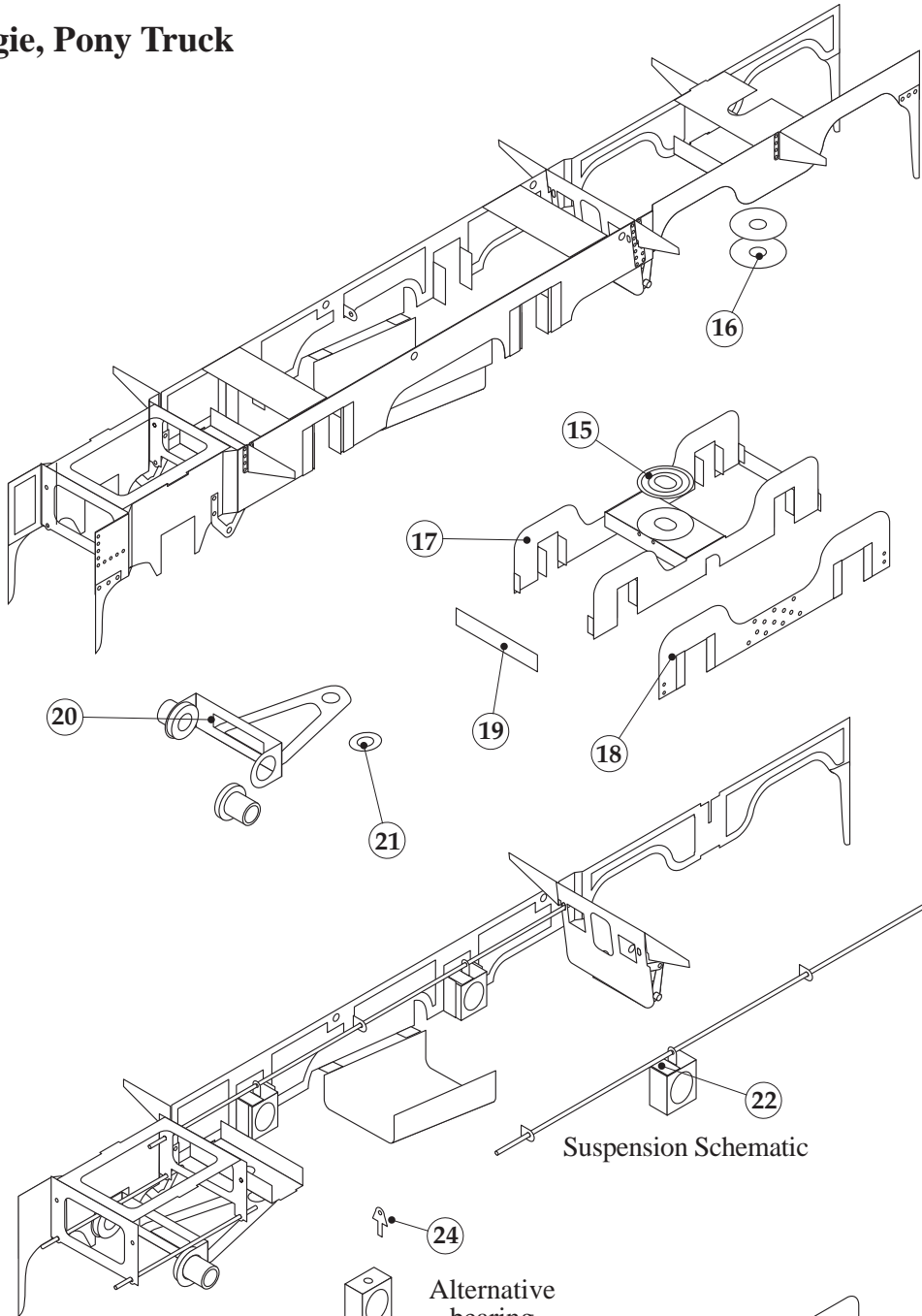
Assembly suggestions



Overlays



Bogie, Pony Truck



Suspension

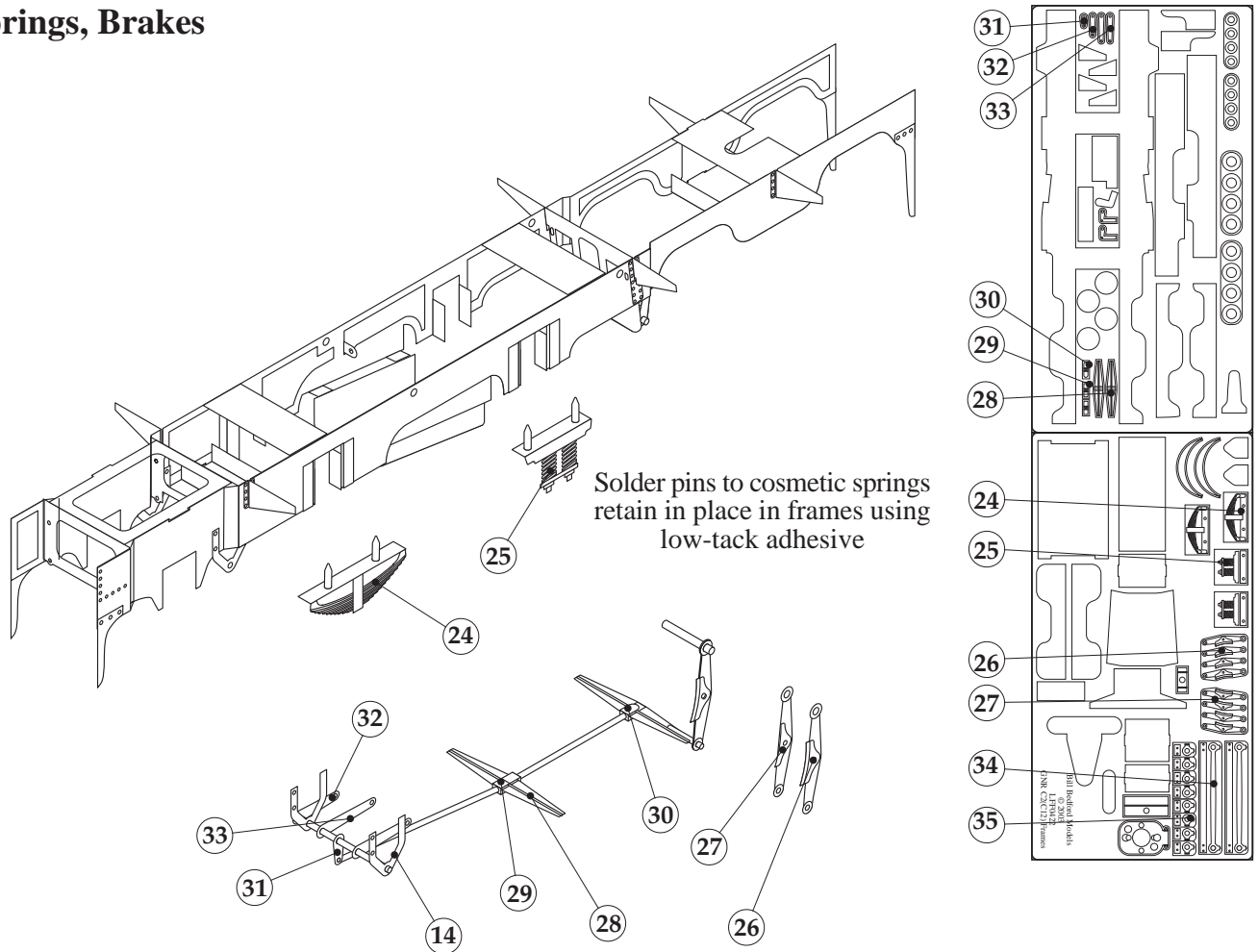
Because of the way the frames have been drawn it is impossible to introduce longitudinal errors in the placement of the horn guides.

To set up the horn guides, first bend out the forward leaf of each horn guide, ensure it is square to the frame and run solder into the fold line.

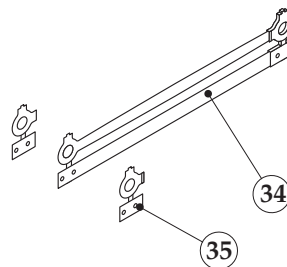
Check the bearings, by mounting them all onto an axle, and placing them on a hard flat surface. By lightly running a finger along the top faces you should be able to feel if one is out by more than about a thou. What is needed is a set of bearings with the distances between, what will be, the leading face and the axle centre are all as close to equal as possible. If rotating one or more of the bearings does not make a matched set, then the block of bearings can be rubbed down on some polishing paper until they are.

Finally bend out rear horn guide. If all has gone well there should be the minimum of play between the bearing and the guide, when the guide is square to the frame, if not the rear guide can be bent forward *slightly* to take up this play.

Springs, Brakes

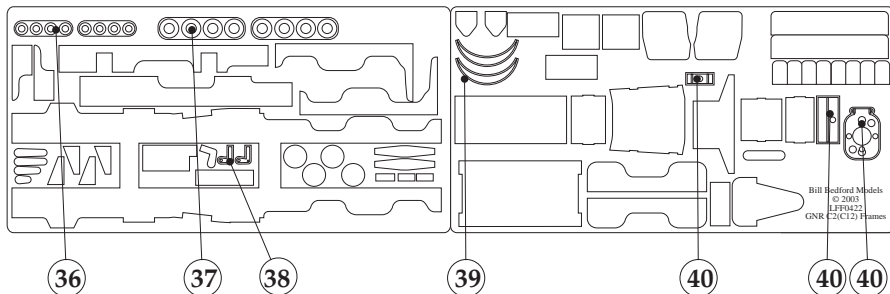


Coupling Rods



Solder the bosses to the coupling rod using .45mm wire pins as location guides.

Other Items



- 36 Axle washers. bogie
- 37 Axle washers. driving wheels
- 38 Die block lifting links
- 39 Driving wheel balance weights
- 40 Motor mount / torque reaction arm

